



WEVER & DUCRÉ
LIGHTING

TRAIN 2.0

306968L5

Project

Type

Notes

Quantity

Date

GENERAL

Wall , Surface

Aluminium Brushed

IP20

Interior

Indirect 375 lm

Direct 375 lm

Total 750 lm

CIE flux code: 95 99 100 50 100

LED

3000 K

CRI \geq 90

L70 / 55000h

3 SDCM

OPTICAL

Medium , Beam angle 36°

ELECTRICAL

phase-cut dim

220 - 240 V

Total connected power 8.8 W

Class 1

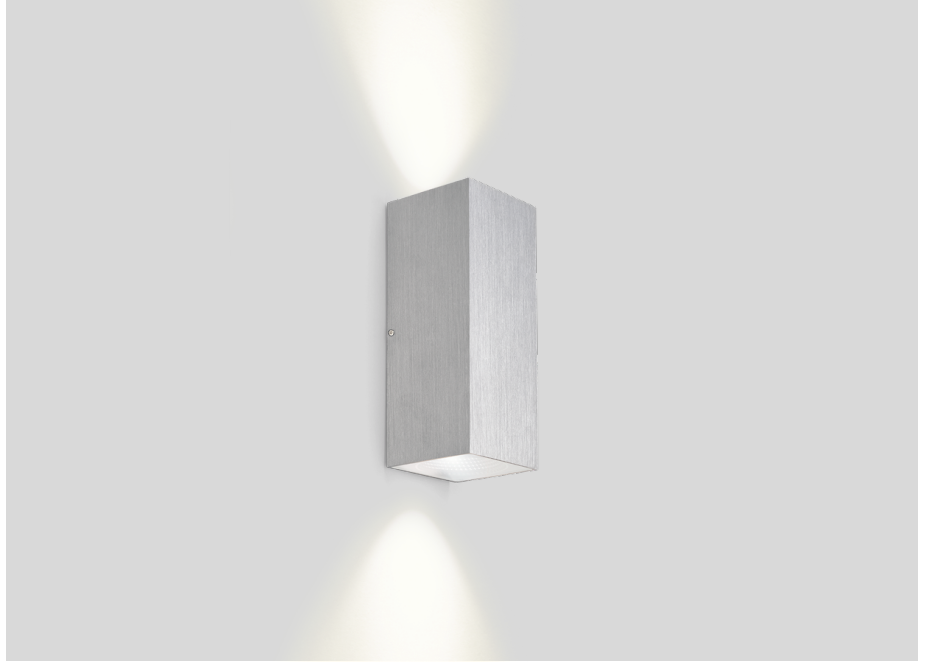
PHYSICAL

Length 50 mm

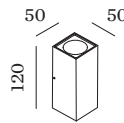
Width 50 mm

Height 120 mm

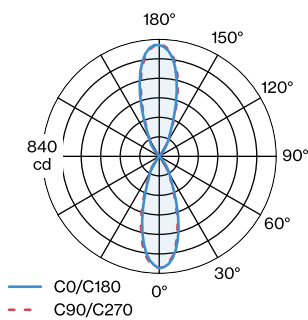
0.35 kg



Squared wall surface mounted luminaire made from aluminium; surface Aluminium Brushed; up and down light emission; beam angle 36°; with COB (Chip on Board) technology for maximum efficiency; phase-cut dim; light colour 3000 K; binning initial MacAdam \leq 3 SDCM; CRI \geq 90; 220 - 240 V; driver included; degree of protection IP20; PC1; light source not replaceable;



LIGHT DISTRIBUTION





WEVER & DUCRÉ
LIGHTING

TRAIN 2.0

306968L5