

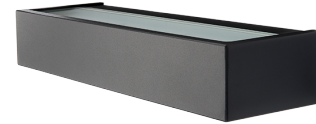
Edge Black 520lm 3000K Ra>80 Trailing edge dimming

Article code: 614351
 EAN: 7021986143515



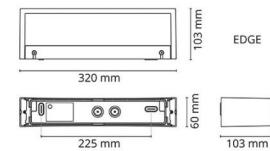
Electrical

System wattage: 10W
 Voltage: 220-240V
 Max. luminaires per circuit breaker: B10: 33, B16: 52, C10: 40, C16: 64



Light technic

Type of light source: LED
 Luminous flux: 520lm
 Efficacy: 52 lm/W
 Colour temperature: 3000K
 Colour rendering (CRI): Ra>80
 MacAdams factor: SDCM: 3
 Lifetime: L70/B10>50,000
 Light distribution: Direct
 Optic: Glass Clear
 Beam angle: 110°/110°



Control/Dimming

Type: Trailing edge dimming

Protection

Luminaire class: Class I

Energy and approvals

Contains light source of energy class: C
 Breeam: Fulfils Hea 01 for flicker free lighting

Materials and finish

Housing: Aluminium
 Colour: Black (RAL 9004)
 Optics: Tempered glass

Mounting/Connection

Mounting: Surface, Indoor / Outdoor
 Connection: Screwless terminal block

Dimensions

Width (mm) W: 320
 Height (mm) H: 60
 Depth (D): 103
 Weight (kg) gross/net: 2.04 / 1.7

Packaging

Packing dimensions (mm): 330 x 120 x 70

